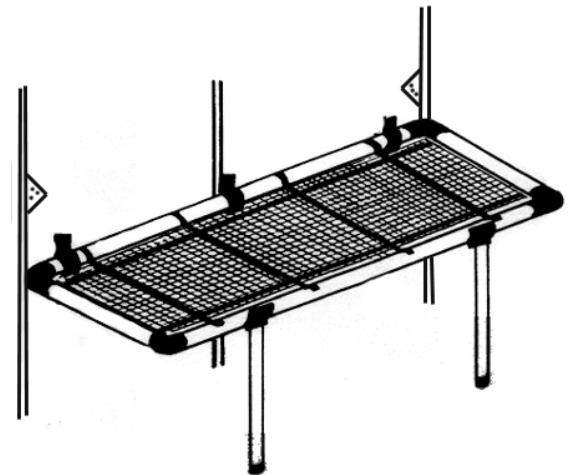


FOLDING STAGING B9(01)

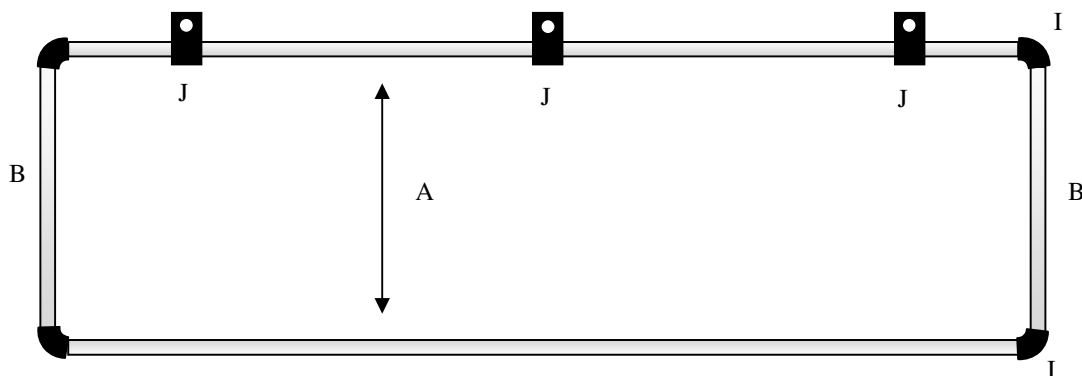


COMPONENTS

| Code | Description | Qty |
|------|--------------------------------------|-----|
| A | Tube 1190mm | 2 |
| B | Tube 470mm | 2 |
| C | Tube 915mm | 2 |
| D | Flat Bar 1170mm | 2 |
| E | Flat bar 524mm | 4 |
| F | Flat Bar 44mm (Folded) | 3 |
| G | Flat Bar 44mm | 8 |
| H | Mesh 1190mm x 457mm | 1 |
| I | Plastic Corner Joint | 4 |
| J | Hinge Cleat (with nut, bolt, washer) | 3 |
| K | Hinge Fixing Plate | 2 |
| L | Leg Cap | 2 |
| M | Tube Leg Clip | 2 |
| | Footplates | 2 |
| | Cropped bolts and nuts | 7 |
| | Slotted bolts and nuts | 8 |

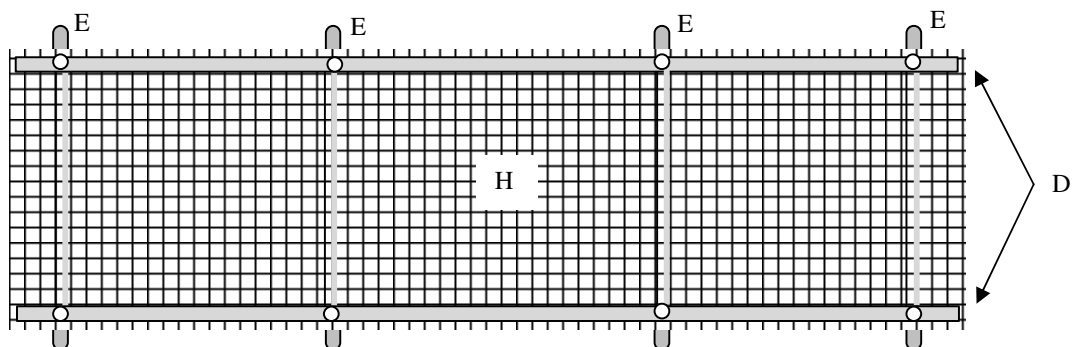


1. Please check the components.
2. Assemble the tubular framework as shown in below, using a wooden or rubber mallet.

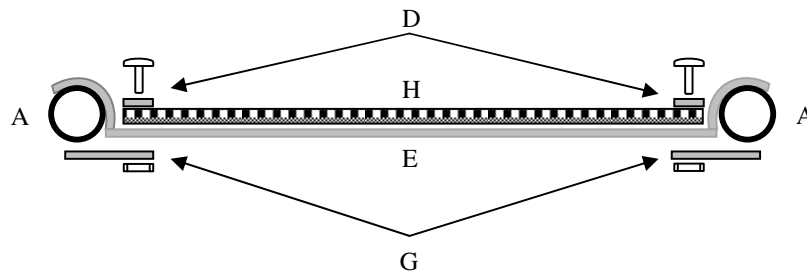


MESH ASSEMBLY.

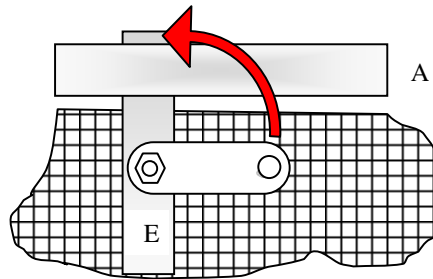
3. Lay the mesh on a flat surface with the shortest wires on the bottom.
4. Lay the longest lengths of the bar along the top two outer sections of the mesh. This will give you the positions of the four cross bars "E".



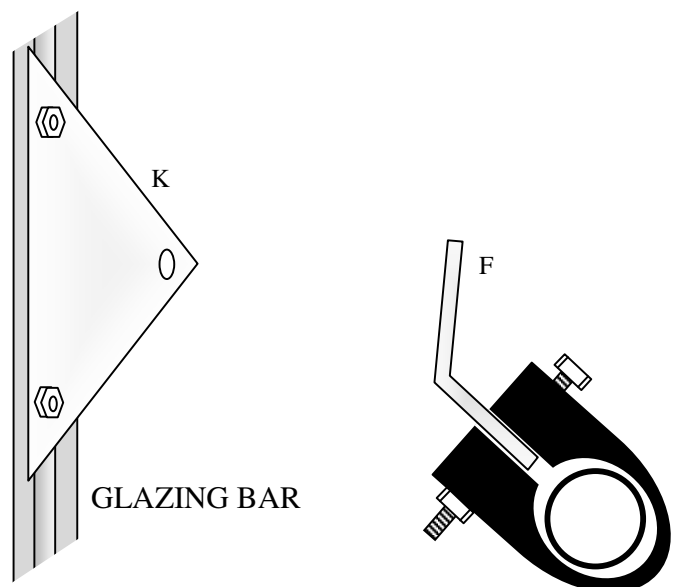
- Place the cross bar under the mesh with the fold facing upwards.



- Align holes, together with 44mm fixing brackets and fasten finger tight only. The mesh assembly sits inside the tubular frame.
- Turn the underside fixing brackets "G" so they sit to the underside of the tube and tighten the bolts fully.



- Using the Cropped Bolts and Nuts fix the triangular fixing plates to the greenhouse glazing bars at the desired height. The two outer hinge cleats then bolt onto the remaining holes in the fixing plates.



- The tubes "C" can be cut down to the preferred height. Push a tube clip and end cap into either end each upright tube and clip onto underside of framework.
- If on soft ground place a 2" Footplate under each upright.

